

Courtesy Of Viktoriya V Finkbeiner Of Century 21 Leading

## **\$472,000 - 81 Avonlea Way, Spruce Grove**

MLS® #E4431072

**\$472,000**

3 Bedroom, 3.00 Bathroom, 1,613 sqft  
Single Family on 0.00 Acres

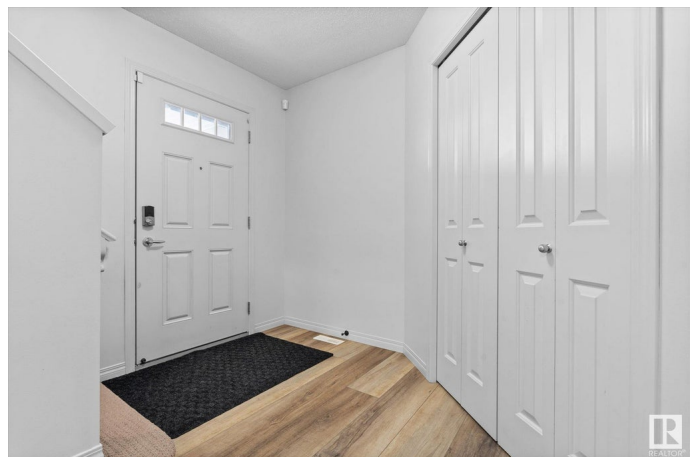
Aspen Glen, Spruce Grove, AB

If you are looking for a TURNKEY home, to just move in and enjoy & not worry about anything for awhile, this is it! Located in a beautiful neighborhood of Aspen Glen, next to walking trails, golf course and close to major commutes, this home is perfect for raising a family! The main floor features a spacious floor plan with bright living room, kitchen (& corner pantry), dining room with sliding doors to the south facing back yard, two pc bath & laundry/mudroom entrance to the double attached garage. Upstairs you will find a cozy bonus room with vaulted ceilings, two spacious bedrooms with 4 pc main bath & generous primary suite with walk through 4 pc ensuite & walk in closet! Basement is fully finished & is perfect for entertaining! Large family room with 2 pc bath (roughed in shower) & storage/utility room. Recent updates include new laminate flooring & paint on main floor, new furnace & A/C! South facing back yard features a massive deck, storage shed & plenty of space for kids & pets!

Built in 2008

### **Essential Information**

MLS® #	E4431072
Price	\$472,000
Bedrooms	3



Bathrooms	3.00
Full Baths	2
Half Baths	2
Square Footage	1,613
Acres	0.00
Year Built	2008
Type	Single Family
Sub-Type	Detached Single Family
Style	2 Storey
Status	Active

### **Community Information**

Address	81 Avonlea Way
Area	Spruce Grove
Subdivision	Aspen Glen
City	Spruce Grove
County	ALBERTA
Province	AB
Postal Code	T7X 4R5

### **Amenities**

Amenities	Air Conditioner, Deck, No Smoking Home
Parking	Double Garage Attached

### **Interior**

Interior Features	ensuite bathroom
Appliances	Air Conditioning-Central, Dishwasher-Built-In, Dryer, Garage Control, Garage Opener, Hood Fan, Refrigerator, Storage Shed, Stove-Electric, Washer, Window Coverings
Heating	Forced Air-1, Natural Gas
Fireplace	Yes
Fireplaces	Corner
Stories	3
Has Basement	Yes
Basement	Full, Finished

### **Exterior**

Exterior	Wood, Stone, Vinyl
Exterior Features	Fenced, Landscaped, No Back Lane, Playground Nearby, Public

Transportation, Schools, Shopping Nearby

Roof Asphalt Shingles  
Construction Wood, Stone, Vinyl  
Foundation Concrete Perimeter

### **School Information**

Elementary Millgrove  
Middle Brookwood  
High Spruce Grove Comp

### **Additional Information**

Date Listed April 15th, 2025  
Days on Market 7  
Zoning Zone 91

DATA IS DEEMED RELIABLE BUT IS NOT GUARANTEED ACCURATE BY THE REALTORS® ASSOCIATION OF EDMONTON. COPYRIGHT 2025 BY THE REALTORS® ASSOCIATION OF EDMONTON. ALL RIGHTS RESERVED. Trademarks are owned or controlled by the Canadian Real Estate Association (CREA) and identify real estate professionals who are members of CREA (REALTOR®, REALTORS®) and/or the quality of services they provide (MLS®, Multiple Listing Service®)

Listing information last updated on April 22nd, 2025 at 8:47am MDT