

\$639,999 - 3409 Craig Landing Landing, Edmonton

MLS® #E4430700

\$639,999

4 Bedroom, 3.50 Bathroom, 1,815 sqft

Single Family on 0.00 Acres

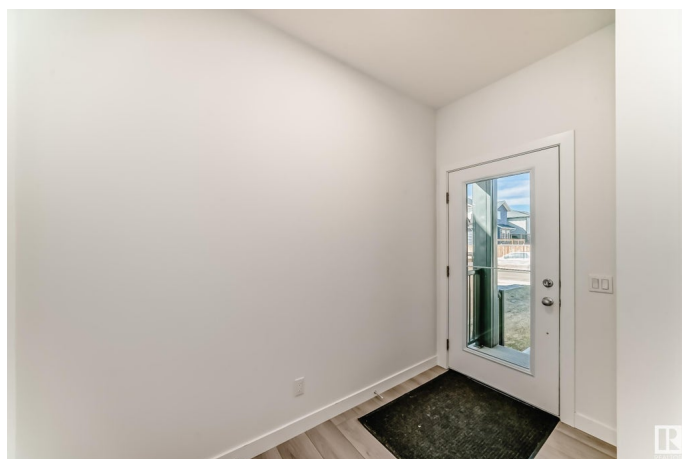
Chappelle Area, Edmonton, AB

INVESTOR ALERT - LEGAL BASEMENT SUITE. Discover modern charm and practicality in this inviting home nestled in the heart of Chapelle. With stainless steel appliances, quartz countertops, and a walk-in pantry, the kitchen is as functional as it is stylish. The open-concept dining and living area are bathed in natural light, offering a welcoming space for relaxation. Upstairs, three spacious bedrooms, two full baths, and a bonus room await, while the legal basement suite with a separate entrance provides versatility for guests or rental income. Conveniently located near amenities, this property offers the perfect blend of comfort and investment potential.

Built in 2022

Essential Information

MLS® #	E4430700
Price	\$639,999
Bedrooms	4
Bathrooms	3.50
Full Baths	3
Half Baths	1
Square Footage	1,815
Acres	0.00
Year Built	2022



Type	Single Family
Sub-Type	Detached Single Family
Style	2 Storey
Status	Active

Community Information

Address	3409 Craig Landing Landing
Area	Edmonton
Subdivision	Chappelle Area
City	Edmonton
County	ALBERTA
Province	AB
Postal Code	T6W 5B3

Amenities

Amenities	Ceiling 9 ft., Deck, Detectors Smoke, No Smoking Home
Parking Spaces	2
Parking	Double Garage Attached

Interior

Interior Features	ensuite bathroom
Appliances	Dishwasher - Energy Star, Dryer, Garage Control, Garage Opener, Refrigerator-Energy Star, Stove-Electric, Washer - Energy Star, Window Coverings, Dryer-Two, Refrigerators-Two, Stoves-Two, Washers-Two
Heating	Forced Air-1, Natural Gas
Stories	3
Has Basement	Yes
Basement	Full, Finished

Exterior

Exterior	Wood, Stone, Vinyl
Exterior Features	Fenced, Landscaped, Playground Nearby, Public Transportation, Schools, Shopping Nearby
Roof	Asphalt Shingles
Construction	Wood, Stone, Vinyl
Foundation	Concrete Perimeter

Additional Information

Date Listed	April 13th, 2025
Days on Market	8

Zoning

Zone 55

DATA IS DEEMED RELIABLE BUT IS NOT GUARANTEED ACCURATE BY THE REALTORS® ASSOCIATION OF EDMONTON. COPYRIGHT 2025 BY THE REALTORS® ASSOCIATION OF EDMONTON. ALL RIGHTS RESERVED. Trademarks are owned or controlled by the Canadian Real Estate Association (CREA) and identify real estate professionals who are members of CREA (REALTOR®, REALTORS®) and/or the quality of services they provide (MLS®, Multiple Listing Service®)

Listing information last updated on April 21st, 2025 at 2:02pm MDT