

\$189,900 - 104 25 Element Dr, St. Albert

MLS® #E4429698

\$189,900

2 Bedroom, 1.00 Bathroom, 686 sqft

Condo / Townhouse on 0.00 Acres

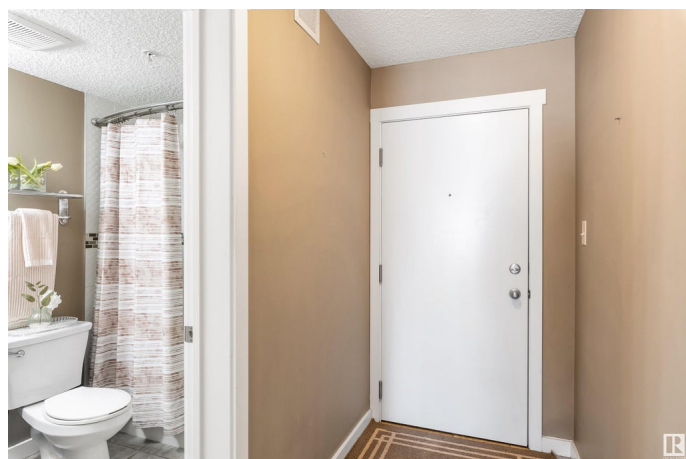
Erin Ridge North, St. Albert, AB

Discover this amazing two bedroom unit in Erin Ridge Gate! Perfect for first time homebuyers. Just off the entrance is the main four piece bathroom. The kitchen has tile backsplash, stainless steel appliances, GRANITE countertops and a eating bar. The kitchen seamlessly flows into the living and dining areas- perfect for entertaining guests. The cozy living room has access to the patio to enjoy your morning cup of coffee. The PATIO also has easy access to the unit- convenient for unloading groceries etc. Two bedrooms, INSUITE LAUNDRY and a assigned outdoor parking stall complete this great unit! Close to public transportation, shopping and schools, this property is in the heart of everything you need. Don't miss out on this opportunity to own a piece of Erin Ridge Gate!

Built in 2016

Essential Information

MLS® #	E4429698
Price	\$189,900
Bedrooms	2
Bathrooms	1.00
Full Baths	1
Square Footage	686
Acres	0.00
Year Built	2016



Type	Condo / Townhouse
Sub-Type	Lowrise Apartment
Style	Single Level Apartment
Status	Active

Community Information

Address	104 25 Element Dr
Area	St. Albert
Subdivision	Erin Ridge North
City	St. Albert
County	ALBERTA
Province	AB
Postal Code	T8N 7S1

Amenities

Amenities	See Remarks
Parking	Stall

Interior

Appliances	Dishwasher-Built-In, Dryer, Microwave Hood Fan, Refrigerator, Stove-Electric, Washer, Window Coverings
Heating	Baseboard, Natural Gas
# of Stories	4
Stories	1
Has Basement	Yes
Basement	None, No Basement

Exterior

Exterior	Wood, Stone, Vinyl
Exterior Features	Picnic Area, Playground Nearby, Public Transportation, Schools, Shopping Nearby, See Remarks
Roof	Asphalt Shingles
Construction	Wood, Stone, Vinyl
Foundation	Concrete Perimeter

Additional Information

Date Listed	April 8th, 2025
Days on Market	13
Zoning	Zone 24

Condo Fee \$424

DATA IS DEEMED RELIABLE BUT IS NOT GUARANTEED ACCURATE BY THE REALTORS® ASSOCIATION OF EDMONTON. COPYRIGHT 2025 BY THE REALTORS® ASSOCIATION OF EDMONTON. ALL RIGHTS RESERVED. Trademarks are owned or controlled by the Canadian Real Estate Association (CREA) and identify real estate professionals who are members of CREA (REALTOR®, REALTORS®) and/or the quality of services they provide (MLS®, Multiple Listing Service®)

Listing information last updated on April 21st, 2025 at 4:32pm MDT