

## \$105,000 - 54 Rim Road, Edmonton

MLS® #E4429437

**\$105,000**

3 Bedroom, 1.00 Bathroom, 1,034 sqft

Land Lease Community on 0.00 Acres

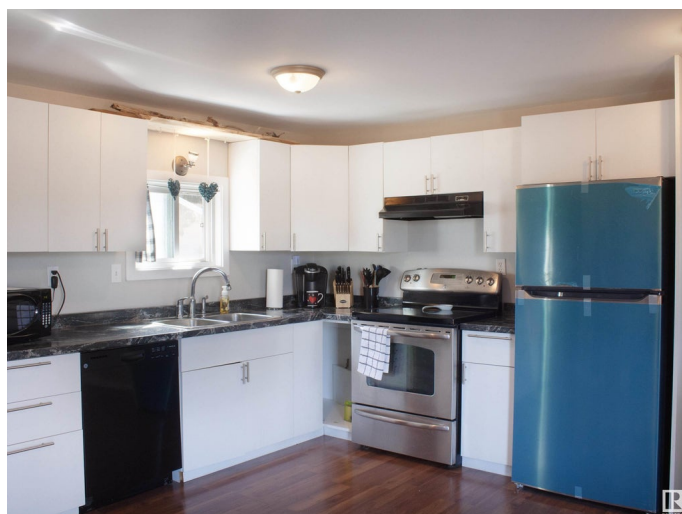
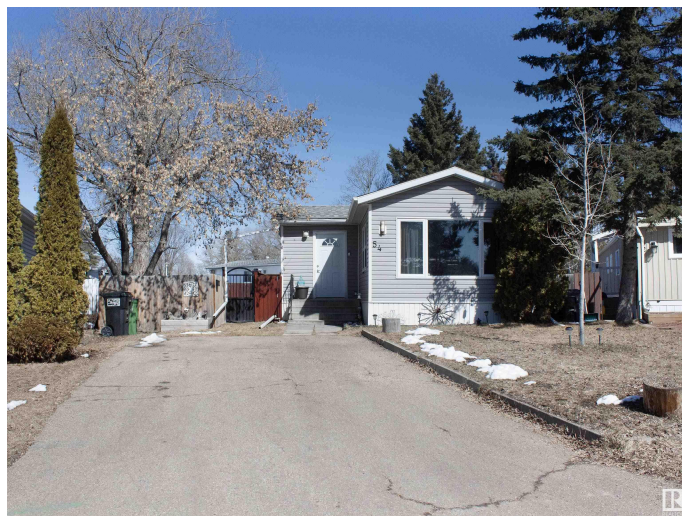
Maple Ridge (Edmonton), Edmonton, AB

Three bedroom, one bath home located on a large fenced lot on the eastern edge of Maple Ridge. Lots of recent improvements including new heat tape in 2021, the water tank was replaced in 2019, furnace in 2019, new washer & dryer in 2018 and refrigerator in 2023. The home lets in lots of natural sunlight. At the front door there is a sizable mud room with an ample closet. Outside, the oversized yard has mature trees, a roomy garden shed and a dog run. There is also a 12' x 12' deck off the kitchen. Great location with extra visitor parking just across the street.

Built in 1979

### Essential Information

MLS® #	E4429437
Price	\$105,000
Bedrooms	3
Bathrooms	1.00
Full Baths	1
Square Footage	1,034
Acres	0.00
Year Built	1979
Type	Land Lease Community
Sub-Type	Detached Single Family
Style	Bungalow
Status	Active



## Community Information

Address	54 Rim Road
Area	Edmonton
Subdivision	Maple Ridge (Edmonton)
City	Edmonton
County	ALBERTA
Province	AB
Postal Code	T6P 1C2

## Amenities

Parking	Parking Pad Cement/Paved
---------	--------------------------

## Interior

Appliances	Dishwasher-Built-In, Dryer, Freezer, Hood Fan, Refrigerator, Storage Shed, Stove-Electric, Washer, Window Coverings, See Remarks
Heating	Forced Air-1, Natural Gas

## Exterior

Exterior	Wood
Construction	Wood
Foundation	Block

## Additional Information

Date Listed	April 5th, 2025
Days on Market	13
Zoning	Zone 42

DATA IS DEEMED RELIABLE BUT IS NOT GUARANTEED ACCURATE BY THE REALTORS® ASSOCIATION OF EDMONTON. COPYRIGHT 2025 BY THE REALTORS® ASSOCIATION OF EDMONTON. ALL RIGHTS RESERVED. Trademarks are owned or controlled by the Canadian Real Estate Association (CREA) and identify real estate professionals who are members of CREA (REALTOR®, REALTORS®) and/or the quality of services they provide (MLS®, Multiple Listing Service®)

Listing information last updated on April 18th, 2025 at 7:47pm MDT