

Courtesy Of Vincenzo C Fiacco Of RE/MAX Excellence

\$729,900 - 190 Gariepy Crescent, Edmonton

MLS® #E4428189

\$729,900

4 Bedroom, 3.50 Bathroom, 2,232 sqft

Single Family on 0.00 Acres

Gariepy, Edmonton, AB

Custom-Built Executive 2 STOREY

Masterpiece, offers elegance and magnificent living spaces in a quiet cul-de-sac, BACKING ONTO the Edmonton Golf and Country Club!

As you enter you are greeted with a large Foyer. The Main Floor hosts 2 Living Rooms, Large Kitchen, Formal Dining, Large living space with its warm open floor plan is imbued with natural light. The kitchen outstanding from every angle, showcases tasteful finishes with an eating area overlooking the family room with brick fireplace and patio doors leading out to a raised deck with a 6 person hot tub and a large yard backing onto the Country Club.

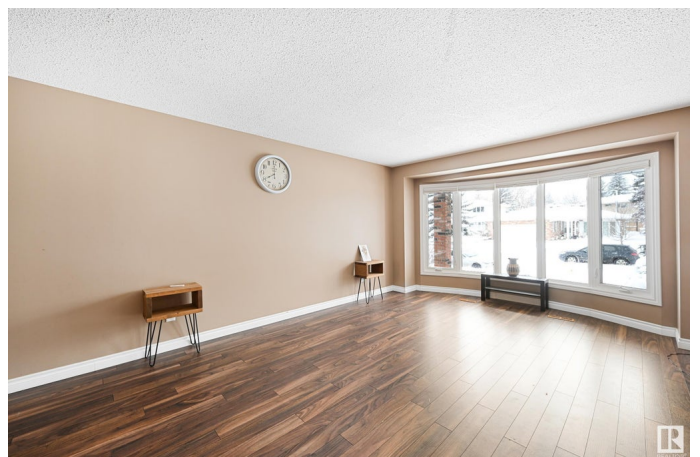
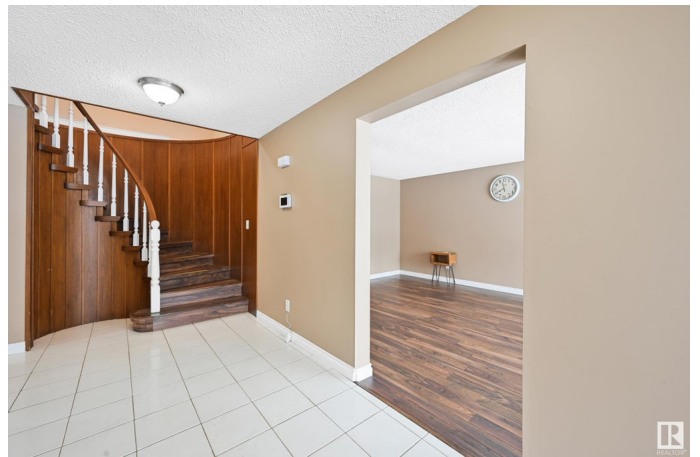
Upstairs Boasts FOUR Large Bedrooms, and 2 Full Bathrooms. The Master Retreat showcases a walk-in closet and a 4 piece ensuite bath. Fully Finished Basement has a large living room with a WetBar, Bedroom, Full Bathroom, Office, storage room and laundry. Upgrades: Windows, Shingles, Deck, Flooring, Stucco, Eaves, Doors, Furnace, Tank. Close to Shopping, Schools, Golf Course, Restaurants, Trails, Parks.

Built in 1978

Essential Information

MLS® # E4428189

Price \$729,900



Bedrooms	4
Bathrooms	3.50
Full Baths	3
Half Baths	1
Square Footage	2,232
Acres	0.00
Year Built	1978
Type	Single Family
Sub-Type	Detached Single Family
Style	2 Storey
Status	Active

Community Information

Address	190 Gariepy Crescent
Area	Edmonton
Subdivision	Gariepy
City	Edmonton
County	ALBERTA
Province	AB
Postal Code	T6M 1A2

Amenities

Amenities	Bar, Deck, Hot Tub, No Animal Home, No Smoking Home
Parking	Double Garage Attached

Interior

Interior Features	ensuite bathroom
Appliances	Dishwasher-Built-In, Dryer, Refrigerator, Stove-Electric, Washer, Window Coverings, Hot Tub
Heating	Forced Air-1, Natural Gas
Fireplace	Yes
Fireplaces	Brick Facing
Stories	3
Has Basement	Yes
Basement	Full, Finished

Exterior

Exterior	Wood, Stucco
Exterior Features	Backs Onto Park/Trees, Cul-De-Sac, Fenced, Golf Nearby, Playground

Nearby, Schools, Shopping Nearby

Roof Asphalt Shingles
Construction Wood, Stucco
Foundation Concrete Perimeter

Additional Information

Date Listed March 29th, 2025
Days on Market 6
Zoning Zone 20

DATA IS DEEMED RELIABLE BUT IS NOT GUARANTEED ACCURATE BY THE REALTORS® ASSOCIATION OF EDMONTON. COPYRIGHT 2025 BY THE REALTORS® ASSOCIATION OF EDMONTON. ALL RIGHTS RESERVED. Trademarks are owned or controlled by the Canadian Real Estate Association (CREA) and identify real estate professionals who are members of CREA (REALTOR®, REALTORS®) and/or the quality of services they provide (MLS®, Multiple Listing Service®)

Listing information last updated on April 4th, 2025 at 4:02am MDT