

\$549,000 - 442 Macewan Road, Edmonton

MLS® #E4427019

\$549,000

4 Bedroom, 3.50 Bathroom, 1,765 sqft
Single Family on 0.00 Acres

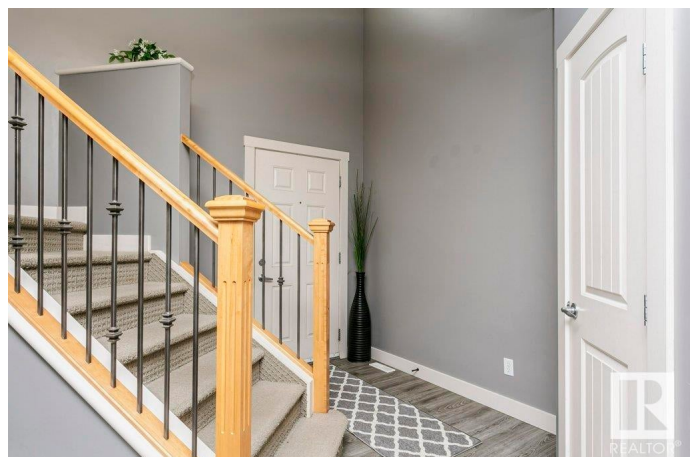
Macewan, Edmonton, AB

MacEwan Beauty! This 4Bdrm, 4Bath home has bright, open concept living spaces with thoughtful design. The main floor features a spacious living area with a cozy gas fireplace, a well-appointed kitchen, dedicated dining space and convenient main floor laundry. Upstairs, you'll find a spacious and stunning vaulted bonus room—perfect for a second living space, playroom, or home office. The King Sized Primary is an Oasis with forest views, a generous ensuite with corner tub and walk in closet. 2 Secondary bedrooms and 4 pc guest bath complete the upper level. Downstairs, is fully finished -providing even more space with a large family room, 4th bedroom, 3-piece bath, and extra storage. West facing, TREE BACKING, PRIVATE backyard features an Expansive deck, Irrigation System + NO REAR Neighbours! Fresh Paint, Vinyl Plank Floors, Newer Shingles (2021) and insulated 22 x 20 double attached garage are welcome extras. The location is quiet and convenient, with shops and arterial routes just minutes away.

Built in 2006

Essential Information

MLS® #	E4427019
Price	\$549,000



Bedrooms	4
Bathrooms	3.50
Full Baths	3
Half Baths	1
Square Footage	1,765
Acres	0.00
Year Built	2006
Type	Single Family
Sub-Type	Detached Single Family
Style	2 Storey
Status	Active

Community Information

Address	442 Macewan Road
Area	Edmonton
Subdivision	Macewan
City	Edmonton
County	ALBERTA
Province	AB
Postal Code	T6W 1V4

Amenities

Amenities	Closet Organizers, Deck, Detectors Smoke, Dog Run-Fenced In, Fire Pit, Front Porch, Vaulted Ceiling, See Remarks
Parking	Double Garage Attached, Over Sized

Interior

Interior Features	ensuite bathroom
Appliances	Dishwasher-Built-In, Dryer, Garage Control, Garage Opener, Microwave Hood Fan, Refrigerator, Storage Shed, Stove-Electric, Washer, Window Coverings
Heating	Forced Air-1, Natural Gas
Stories	3
Has Basement	Yes
Basement	Full, Finished

Exterior

Exterior	Wood, Vinyl
Exterior Features	Airport Nearby, Backs Onto Park/Trees, Fenced, Landscaped, No Back

Lane, Playground Nearby, Public Transportation, Schools, Shopping
Nearby

Roof Asphalt Shingles
Construction Wood, Vinyl
Foundation Concrete Perimeter

Additional Information

Date Listed March 22nd, 2025
Days on Market 14
Zoning Zone 55

DATA IS DEEMED RELIABLE BUT IS NOT GUARANTEED ACCURATE BY THE REALTORS® ASSOCIATION OF EDMONTON. COPYRIGHT 2025 BY THE REALTORS® ASSOCIATION OF EDMONTON. ALL RIGHTS RESERVED. Trademarks are owned or controlled by the Canadian Real Estate Association (CREA) and identify real estate professionals who are members of CREA (REALTOR®, REALTORS®) and/or the quality of services they provide (MLS®, Multiple Listing Service®)

Listing information last updated on April 5th, 2025 at 6:47am MDT