

\$780,000 - 30 Eastbrick Place, St. Albert

MLS® #E4426856

\$780,000

6 Bedroom, 3.50 Bathroom, 2,767 sqft
Single Family on 0.00 Acres

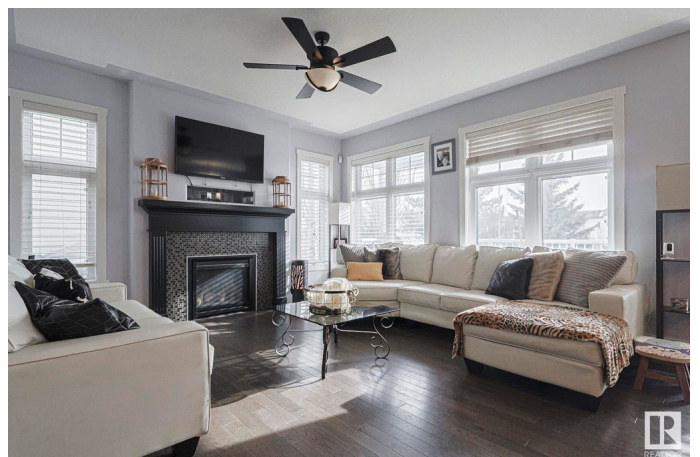
Erin Ridge, St. Albert, AB

Welcome to the Brickyard at Erin Ridge! This home is perfect for a large growing family. Walking through the front door you will see an office to your left. To the right you have a 2 pc bath, access to the garage and your pass through pantry. The open concept kitchen living area boasts tons of counter space & a large island which is perfect for entertaining. Upstairs you will find a total of 5 bedrooms. The primary bedroom has an ensuite with walk in shower, dual sinks, & a walk in closet. The other 4 bedrooms are very spacious. Finishing off the 2nd level is a 4 pc bath. Up on the 3rd level you will find a loft which is perfect for family movie nights! The basement is full finished with a 6th bedroom, 4 pc bath, rec room and storage. The heated garage is a tandem triple and offers overhead door access to the back yard. Other features include A/C, a covered deck off the dining area, a small patio off the 3rd level loft, & brand new carpeting on 3 levels.

Built in 2011

Essential Information

MLS® #	E4426856
Price	\$780,000
Bedrooms	6
Bathrooms	3.50



Full Baths	3
Half Baths	1
Square Footage	2,767
Acres	0.00
Year Built	2011
Type	Single Family
Sub-Type	Detached Single Family
Style	2 Storey
Status	Active

Community Information

Address	30 Eastbrick Place
Area	St. Albert
Subdivision	Erin Ridge
City	St. Albert
County	ALBERTA
Province	AB
Postal Code	T8N 4C7

Amenities

Amenities	Air Conditioner, No Smoking Home
Parking	Tandem, Triple Garage Attached

Interior

Interior Features	ensuite bathroom
Appliances	Air Conditioning-Central, Dishwasher-Built-In, Dryer, Garage Control, Garage Opener, Microwave Hood Fan, Refrigerator, Stove-Electric, Washer, Window Coverings
Heating	Forced Air-1, Natural Gas
Fireplace	Yes
Fireplaces	Direct Vent
Stories	4
Has Basement	Yes
Basement	Full, Finished

Exterior

Exterior	Wood, Brick, Fiber Cement
Exterior Features	Fenced, Golf Nearby, Landscaped
Roof	Asphalt Shingles

Construction Wood, Brick, Fiber Cement
Foundation Concrete Perimeter

Additional Information

Date Listed March 21st, 2025
Days on Market 13
Zoning Zone 24

DATA IS DEEMED RELIABLE BUT IS NOT GUARANTEED ACCURATE BY THE REALTORS® ASSOCIATION OF EDMONTON. COPYRIGHT 2025 BY THE REALTORS® ASSOCIATION OF EDMONTON. ALL RIGHTS RESERVED. Trademarks are owned or controlled by the Canadian Real Estate Association (CREA) and identify real estate professionals who are members of CREA (REALTOR®, REALTORS®) and/or the quality of services they provide (MLS®, Multiple Listing Service®)

Listing information last updated on April 3rd, 2025 at 10:32am MDT