

Courtesy Of Sam Killick and Jakie K Ng Of ARIVL

# \$299,000 - 214 10523 123 Street, Edmonton

MLS® #E4426843

**\$299,000**

2 Bedroom, 2.00 Bathroom, 888 sqft  
Condo / Townhouse on 0.00 Acres

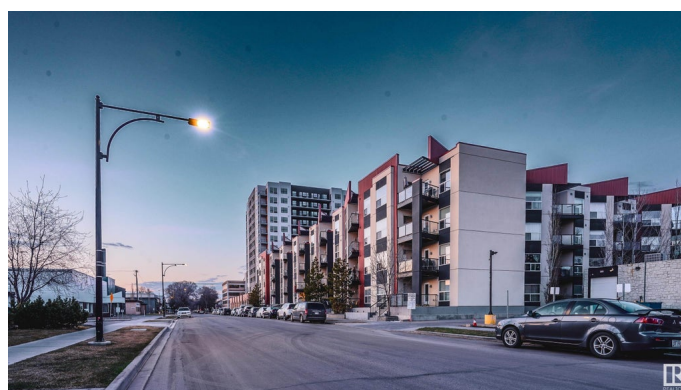
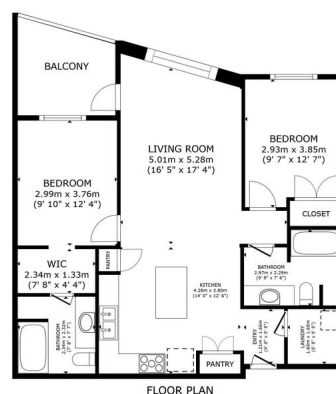
Westmount, Edmonton, AB

MODERN 2-BED, 2-BATH CONDO W/ A/C, IN-SUITE LAUNDRY & UNDERGROUND PARKING – STEPS TO 124 ST & BREWERY DISTRICT! Welcome to High Street District Properties – a stylish, centrally located home designed for the ultimate urban lifestyle. Just steps from Edmonton’s best cafes, bakeries, breweries, restaurants, and cocktail bars, plus easy access to the river valley, bike paths & dog park! This bright & functional layout features 2 separated bedrooms (perfect for roommates!), an open-concept kitchen & living space with a massive island, and stunning west-facing windows for gorgeous sunset views. Enjoy summer nights on the spacious balcony w/ gas hookup! Upgrades include engineered hardwood, sleek stainless steel appliances, tile backsplash, a central heat pump w/ A/C, big windows, front-load laundry & tons of closet space. Plus, enjoy underground parking & a rooftop patio! And the top it all, it's pet friendly! Move-in ready – come see it today!

Built in 2013

## Essential Information

MLS® #	E4426843
Price	\$299,000
Bedrooms	2



Bathrooms	2.00
Full Baths	2
Square Footage	888
Acres	0.00
Year Built	2013
Type	Condo / Townhouse
Sub-Type	Lowrise Apartment
Style	Single Level Apartment
Status	Active

### **Community Information**

Address	214 10523 123 Street
Area	Edmonton
Subdivision	Westmount
City	Edmonton
County	ALBERTA
Province	AB
Postal Code	T5N 1N9

### **Amenities**

Amenities	Air Conditioner, Parking-Visitor
Parking Spaces	1
Parking	Heated, Underground

### **Interior**

Interior Features	ensuite bathroom
Appliances	Air Conditioning-Central, Dishwasher-Built-In, Dryer, Garage Control, Microwave Hood Fan, Refrigerator, Stove-Electric, Washer
Heating	Heat Pump, Electric, Natural Gas
# of Stories	4
Stories	4
Has Basement	Yes
Basement	None, No Basement

### **Exterior**

Exterior	Wood, Metal, Stucco
Exterior Features	Public Transportation, Shopping Nearby
Roof	Roll Roofing
Construction	Wood, Metal, Stucco

Foundation Concrete Perimeter

### School Information

Elementary W&hkw&ant&win School

Middle Westminster School

High Victoria School

### Additional Information

Date Listed March 21st, 2025

Days on Market 15

Zoning Zone 07

Condo Fee \$592

DATA IS DEEMED RELIABLE BUT IS NOT GUARANTEED ACCURATE BY THE REALTORS® ASSOCIATION OF EDMONTON. COPYRIGHT 2025 BY THE REALTORS® ASSOCIATION OF EDMONTON. ALL RIGHTS RESERVED. Trademarks are owned or controlled by the Canadian Real Estate Association (CREA) and identify real estate professionals who are members of CREA (REALTOR®, REALTORS®) and/or the quality of services they provide (MLS®, Multiple Listing Service®)

Listing information last updated on April 5th, 2025 at 12:17am MDT