

Courtesy Of Brittany M Primeau Of KIC Realty

## \$215,000 - 1404 10388 105 Street, Edmonton

MLS® #E4424752

**\$215,000**

1 Bedroom, 1.00 Bathroom, 538 sqft

Condo / Townhouse on 0.00 Acres

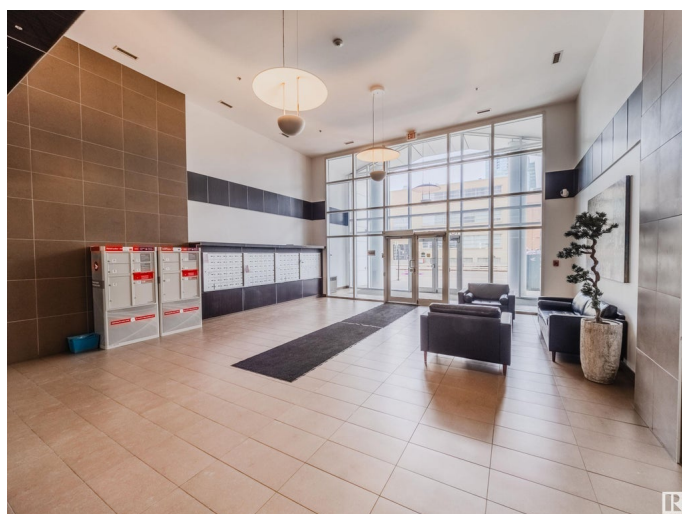
Downtown (Edmonton), Edmonton, AB

Live the Downtown Lifestyle with this executive One Bedroom right in the heart of the action at ROGERS PLACE and NEW ICE DISTRICT! Adding this to your Rental Portfolio, or as young buyer looking for the heart of the city, this location is dialed in! Next door to dining, nightlife and GRANT MACEWAN! This unit has amazing views onto the Ice District, granite countertops/backsplash, open concept kitchen and living space, stainless-steel appliances, front load washer & dryer and hunter douglas window coverings throughout, as well as titled underground parking. Fresh paint and newer carpets, as well as a secured building!

Built in 2009

### Essential Information

MLS® #	E4424752
Price	\$215,000
Bedrooms	1
Bathrooms	1.00
Full Baths	1
Square Footage	538
Acres	0.00
Year Built	2009
Type	Condo / Townhouse
Sub-Type	Apartment High Rise



Style Single Level Apartment  
Status Active

### Community Information

Address 1404 10388 105 Street  
Area Edmonton  
Subdivision Downtown (Edmonton)  
City Edmonton  
County ALBERTA  
Province AB  
Postal Code T5J 0C2

### Amenities

Amenities Air Conditioner, No Animal Home, No Smoking Home, Patio, Vinyl Windows, See Remarks  
Parking Spaces 1  
Parking Heated, Underground

### Interior

Appliances Dishwasher-Built-In, Dryer, Refrigerator, Stove-Electric, Washer  
Heating Hot Water, Natural Gas  
# of Stories 22  
Stories 1  
Has Basement Yes  
Basement None, No Basement

### Exterior

Exterior Concrete, Stucco  
Exterior Features Public Transportation, Schools, Shopping Nearby, View Downtown, See Remarks  
Roof Tar & Gravel  
Construction Concrete, Stucco  
Foundation Concrete Perimeter

### Additional Information

Date Listed March 7th, 2025  
Days on Market 29  
Zoning Zone 12  
Condo Fee \$406

DATA IS DEEMED RELIABLE BUT IS NOT GUARANTEED ACCURATE BY THE REALTORS® ASSOCIATION OF EDMONTON. COPYRIGHT 2025 BY THE REALTORS® ASSOCIATION OF EDMONTON. ALL RIGHTS RESERVED. Trademarks are owned or controlled by the Canadian Real Estate Association (CREA) and identify real estate professionals who are members of CREA (REALTOR®, REALTORS®) and/or the quality of services they provide (MLS®, Multiple Listing Service®)

Listing information last updated on April 5th, 2025 at 12:17am MDT