

# \$449,900 - 104 10606 84 Avenue, Edmonton

MLS® #E4424696

**\$449,900**

2 Bedroom, 2.00 Bathroom, 1,059 sqft  
Condo / Townhouse on 0.00 Acres

Strathcona, Edmonton, AB

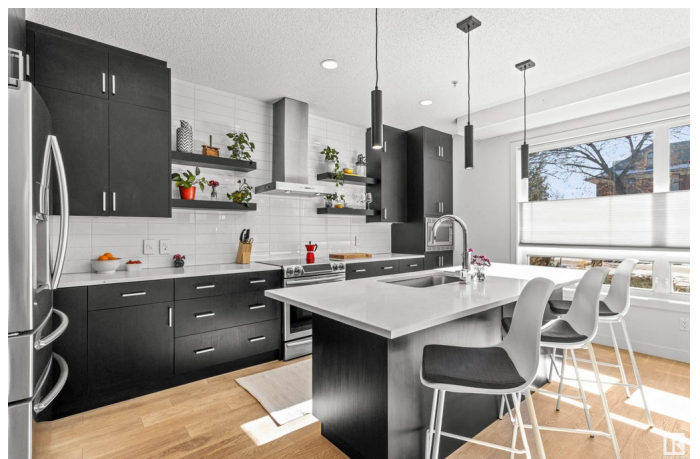
Welcome to your perfect condo! On a tree-lined street and nicely landscaped, 2-bed, 2-bath, 2-parking stall, corner unit with private outdoor patio. Located in Strathcona and walkable to everything. Over 1,000 sq.ft. of big, bright, UV-film treated windows and beautiful finishes. The custom kitchen has SS appliances and upgraded cabinet storage. Primary bedroom has 5-pc bath, walk-through closet and wardrobe. Small, extremely well managed building. Close to U of A campus, University Hospital and Whyte Ave.

Built in 2014

## Essential Information

MLS® #	E4424696
Price	\$449,900
Bedrooms	2
Bathrooms	2.00
Full Baths	2
Square Footage	1,059
Acres	0.00
Year Built	2014
Type	Condo / Townhouse
Sub-Type	Lowrise Apartment
Style	Single Level Apartment
Status	Active

## Community Information



Address	104 10606 84 Avenue
Area	Edmonton
Subdivision	Strathcona
City	Edmonton
County	ALBERTA
Province	AB
Postal Code	T6E 2H6

### Amenities

Amenities	Carbon Monoxide Detectors, Ceiling 9 ft., Intercom, Parking-Visitor, Patio, Secured Parking, Security Door, See Remarks
Parking	Heated, Parkade

### Interior

Interior Features	ensuite bathroom
Appliances	Dishwasher-Built-In, Dryer, Garage Opener, Hood Fan, Oven-Microwave, Refrigerator, Stove-Electric, Washer, Window Coverings
Heating	Hot Water, Natural Gas
# of Stories	3
Stories	1
Has Basement	Yes
Basement	None, No Basement

### Exterior

Exterior	Wood, Brick, Stucco
Exterior Features	Back Lane, Landscaped, Paved Lane, Playground Nearby, Public Transportation, Schools, Shopping Nearby
Roof	EPDM Membrane
Construction	Wood, Brick, Stucco
Foundation	Concrete Perimeter

### Additional Information

Date Listed	March 7th, 2025
Days on Market	43
Zoning	Zone 15
Condo Fee	\$880

DATA IS DEEMED RELIABLE BUT IS NOT GUARANTEED ACCURATE BY THE REALTORS® ASSOCIATION OF EDMONTON. COPYRIGHT 2025 BY THE REALTORS® ASSOCIATION OF EDMONTON. ALL RIGHTS RESERVED. Trademarks are owned or controlled by the Canadian Real Estate Association (CREA) and identify real

estate professionals who are members of CREA (REALTOR®®, REALTORS®®) and/or the quality of services they provide (MLS®®, Multiple Listing Service®®)

Listing information last updated on April 19th, 2025 at 7:47am MDT