

\$190,000 - 4 150 Edwards Drive, Edmonton

MLS® #E4420687

\$190,000

2 Bedroom, 1.00 Bathroom, 727 sqft
Condo / Townhouse on 0.00 Acres

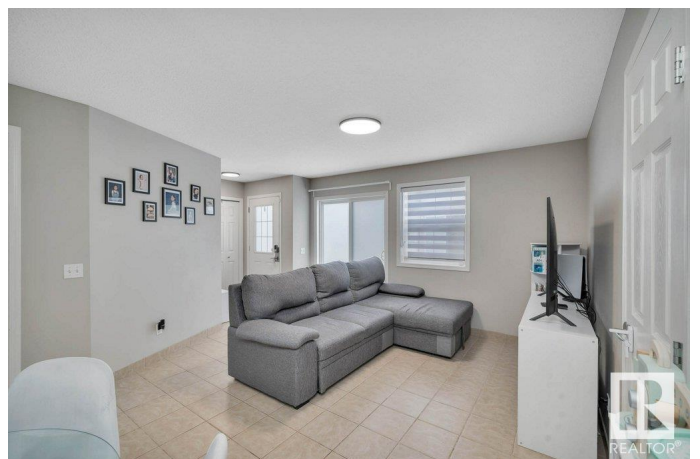
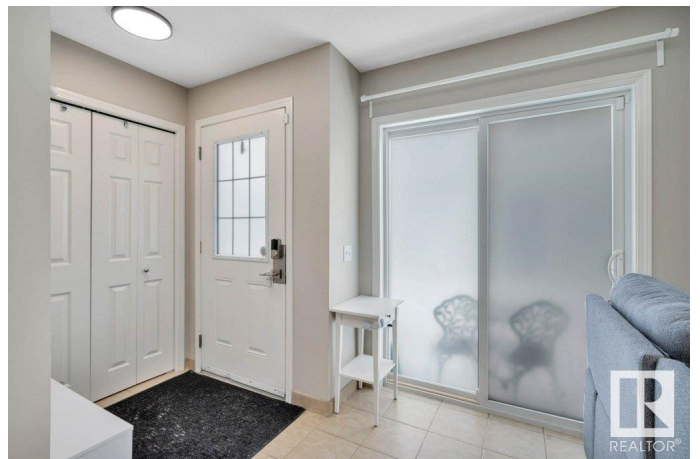
Ellerslie, Edmonton, AB

Attention first-time homebuyers and investors! This charming 2-bedroom, 1-bathroom carriage-style condo in the desirable Ellerslie neighborhood is a must see. Recently upgraded in 2024, this home features all new appliances (fridge, stove, built-in dishwasher, washer, dryer), zebra window coverings, a new tub and tile surround, updated lighting and plumbing fixtures, plus freshly painted walls, trim, and doors. The open concept design boasts in-floor heating & stylish tile floors throughout. Enjoy the convenience of a walk-in closet in the primary bedroom. Situated just minutes from South Edmonton Common and offering easy access to Anthony Henday Drive & QE2, this condo is the perfect blend of comfort and location. If that was not enough the condo fees also cover your heat, water and sewer. Don't miss out on this 10/10 property!

Built in 2005

Essential Information

| | |
|----------------|-----------|
| MLS® # | E4420687 |
| Price | \$190,000 |
| Bedrooms | 2 |
| Bathrooms | 1.00 |
| Full Baths | 1 |
| Square Footage | 727 |



| | |
|------------|-------------------|
| Acres | 0.00 |
| Year Built | 2005 |
| Type | Condo / Townhouse |
| Sub-Type | Carriage |
| Style | Bungalow |
| Status | Active |

Community Information

| | |
|-------------|---------------------|
| Address | 4 150 Edwards Drive |
| Area | Edmonton |
| Subdivision | Ellerslie |
| City | Edmonton |
| County | ALBERTA |
| Province | AB |
| Postal Code | T6X 1M4 |

Amenities

| | |
|-----------|--|
| Amenities | Parking-Visitor, Storage-In-Suite, Vinyl Windows |
| Parking | Stall |

Interior

| | |
|--------------|---|
| Appliances | Dishwasher-Built-In, Hood Fan, Refrigerator, Stacked Washer/Dryer, Stove-Electric, Window Coverings |
| Heating | In Floor Heat System, Natural Gas |
| Stories | 1 |
| Has Basement | Yes |
| Basement | None, No Basement |

Exterior

| | |
|-------------------|---|
| Exterior | Wood, Stone, Vinyl |
| Exterior Features | Airport Nearby, Golf Nearby, Landscaped, Playground Nearby, Public Transportation, Schools, Shopping Nearby |
| Roof | Unknown |
| Construction | Wood, Stone, Vinyl |
| Foundation | Slab |

Additional Information

| | |
|----------------|--------------------|
| Date Listed | February 7th, 2025 |
| Days on Market | 57 |

| | |
|-----------|---------|
| Zoning | Zone 53 |
| Condo Fee | \$399 |

DATA IS DEEMED RELIABLE BUT IS NOT GUARANTEED ACCURATE BY THE REALTORS® ASSOCIATION OF EDMONTON. COPYRIGHT 2025 BY THE REALTORS® ASSOCIATION OF EDMONTON. ALL RIGHTS RESERVED. Trademarks are owned or controlled by the Canadian Real Estate Association (CREA) and identify real estate professionals who are members of CREA (REALTOR®, REALTORS®) and/or the quality of services they provide (MLS®, Multiple Listing Service®)

Listing information last updated on April 5th, 2025 at 6:47am MDT