

\$255,000 - 11406 82 Street, Edmonton

MLS® #E4417443

\$255,000

4 Bedroom, 2.00 Bathroom, 646 sqft
Single Family on 0.00 Acres

Parkdale (Edmonton), Edmonton, AB

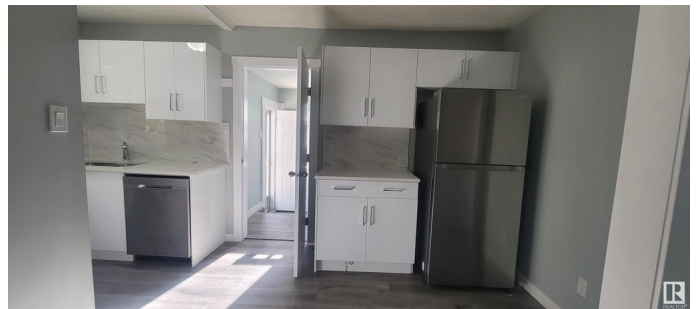
Fully renovated top to bottom, renovations include new windows, flooring, kitchen, paint. semi open concept kitchen and living room. elegant kitchen with new cabinets and stainless-steel appliances, bathroom was fully renovated as well, 2 bedrooms and spacious living room end this level. basement has a separate entrance from the back, two bedrooms and 1 bathroom and a second kitchenet. water tank was replaced couple of months ago. close to schools, shopping and parks.

Built in 1946

Essential Information

MLS® #	E4417443
Price	\$255,000
Bedrooms	4
Bathrooms	2.00
Full Baths	2
Square Footage	646
Acres	0.00
Year Built	1946
Type	Single Family
Sub-Type	Detached Single Family
Style	Bungalow
Status	Active

Community Information



Address	11406 82 Street
Area	Edmonton
Subdivision	Parkdale (Edmonton)
City	Edmonton
County	ALBERTA
Province	AB
Postal Code	T5B 2V4

Amenities

Amenities	See Remarks
Parking	Single Carport, Single Garage Detached

Interior

Appliances	Dryer, Hood Fan, Washer, Refrigerators-Two, Stoves-Two
Heating	Forced Air-1, Natural Gas
Stories	1
Has Basement	Yes
Basement	Full, Finished

Exterior

Exterior	Wood, Vinyl
Exterior Features	Landscaped, Park/Reserve, Schools, Shopping Nearby
Roof	Asphalt Shingles
Construction	Wood, Vinyl
Foundation	Concrete Perimeter

Additional Information

Date Listed	January 8th, 2025
Days on Market	88
Zoning	Zone 05

DATA IS DEEMED RELIABLE BUT IS NOT GUARANTEED ACCURATE BY THE REALTORS® ASSOCIATION OF EDMONTON. COPYRIGHT 2025 BY THE REALTORS® ASSOCIATION OF EDMONTON. ALL RIGHTS RESERVED. Trademarks are owned or controlled by the Canadian Real Estate Association (CREA) and identify real estate professionals who are members of CREA (REALTOR®, REALTORS®) and/or the quality of services they provide (MLS®, Multiple Listing Service®)

Listing information last updated on April 6th, 2025 at 2:47pm MDT